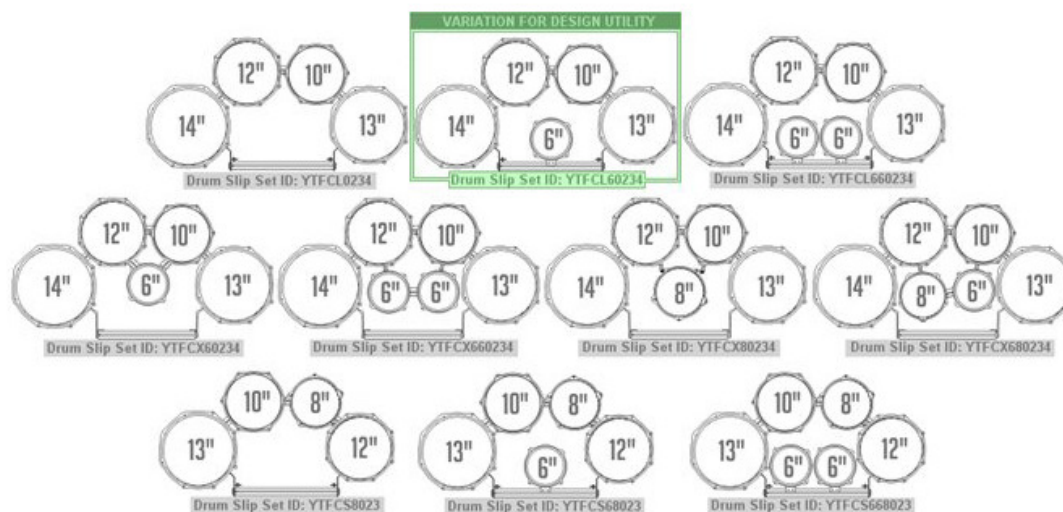




## Yamaha Field-Corps 8200 Series Tenors

### Drum Slip™ Installation Instructions

The instructions in this document apply to the following current model Yamaha Field-Corps 8200 Series marching tenor drum configurations:



It is highly recommended that you read through this entire document **BEFORE** attempting to install Drum Slips™.

Copyright © 2013 ON2 Percussion®  
 DRUM SLIPS ARE PATENT PENDING  
 Drum Slips™ is a registered trademark of ON2 Percussion®  
 ON2 Percussion® is not affiliated with the Yamaha Corporation  
[www.on2percussion.com](http://www.on2percussion.com)

## Step One: Preparing Your Drum for Drum Slips™

1

Remove tom guard (if installed).



2

Unscrew lugs.



3

Remove all drum rims and drum heads.

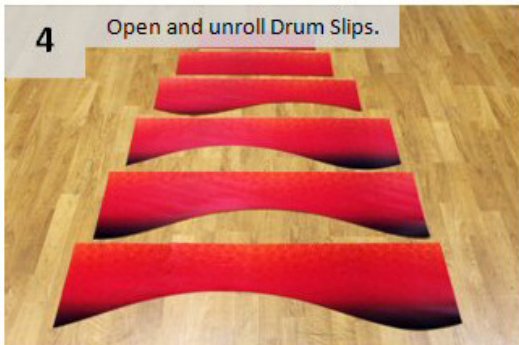


Continue to the installation process.

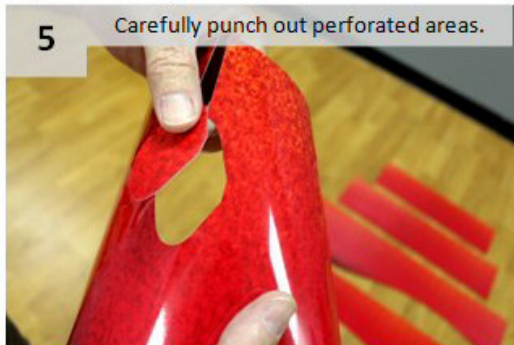


## Step Two: Installing Drum Slips™

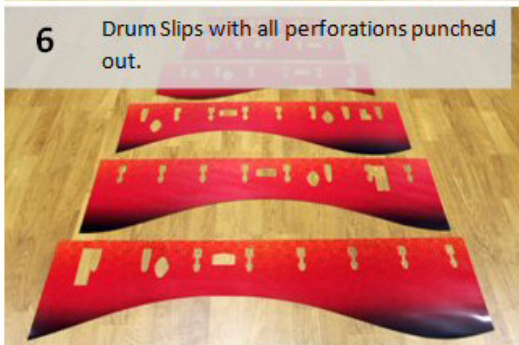
4 Open and unroll Drum Slips.



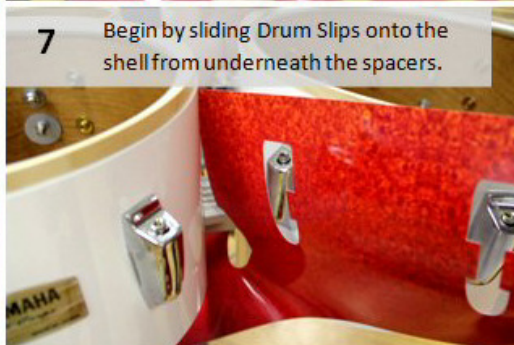
5 Carefully punch out perforated areas.



6 Drum Slips with all perforations punched out.



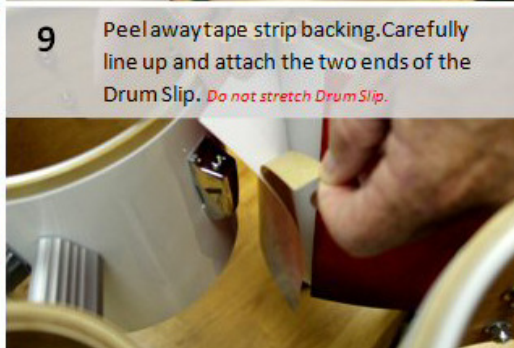
7 Begin by sliding Drum Slips onto the shell from underneath the spacers.



8 Begin wrapping the Drum Slip around the shell of the drum. Slide lug casing wings underneath lug arch.



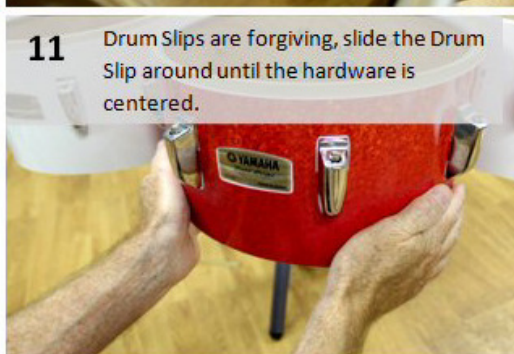
9 Peel away tape strip backing. Carefully line up and attach the two ends of the Drum Slip. *Do not stretch Drum Slip.*



10 Tightly pull and attach the two ends together starting at the bottom of the Drum Slip. *Do not stretch Drum Slip.*



11 Drum Slips are forgiving, slide the Drum Slip around until the hardware is centered.



Continue to Installation Finalization

## Step Three: Finalizing the installation of Drum Slips™

- 12** If desired, reinstall tom guard. Drum Slips must be installed 100% correctly with no warping play in order to reinstall tom guard. *Do not attempt to install tom guard if Drum Slips warp when pinched.*



- 13** Carefully tuck Drum Slip into drum head. To avoid bunching, apply upward pressure on Drum Slip as head is tightened.



- 14** Reinstall drum head and drum rim and apply necessary tension.



Repeat steps as necessary for all drums.

**Finished**

## Installation Complete

