



## Pearl Championship Maple Bass Drums Drum Slip™ Installation Instructions

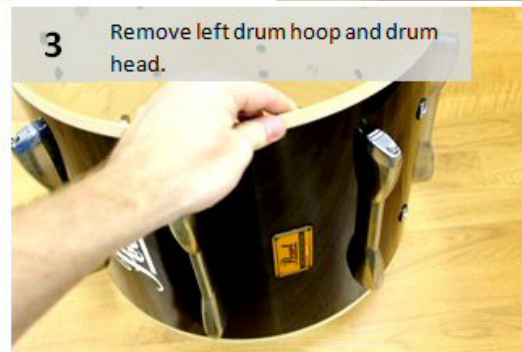
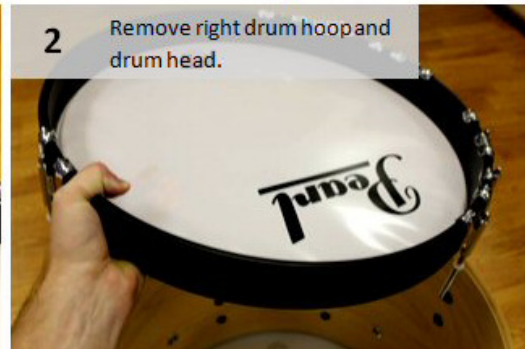
The instructions in this document apply to the following current model Pearl Championship Maple marching bass drums:

- 14"x14" (ON2 Percussion Drum Slip ID: PBCH014)
- 16"x14" (ON2 Percussion Drum Slip ID: PBCH016)
- 18"x14" (ON2 Percussion Drum Slip ID: PBCH018)
- 20"x14" (ON2 Percussion Drum Slip ID: PBCH020)
- 22"x14" (ON2 Percussion Drum Slip ID: PBCH022)
- 24"x14" (ON2 Percussion Drum Slip ID: PBCH024)
- 26"x14" (ON2 Percussion Drum Slip ID: PBCH026)
- 28"x14" (ON2 Percussion Drum Slip ID: PBCH028)
- 30"x16" (ON2 Percussion Drum Slip ID: PBCH030)
- 32"x16" (ON2 Percussion Drum Slip ID: PBCH032)

It is highly recommended that you read through this entire document ***BEFORE*** attempting to install Drum Slips™.

Copyright © 2013 ON2 Percussion®  
DRUM SLIPS ARE PATENT PENDING  
Drum Slips™ is a registered trademark of ON2 Percussion®  
ON2 Percussion® is not affiliated with the Pearl Corporation  
[www.on2percussion.com](http://www.on2percussion.com)

## Step One: Preparing Your Drum for Drum Slips™



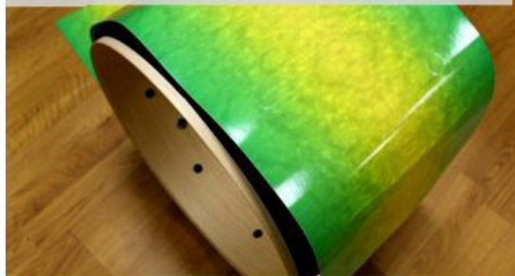
Continue to the installation process.

## Step Two: Installing Drum Slips™

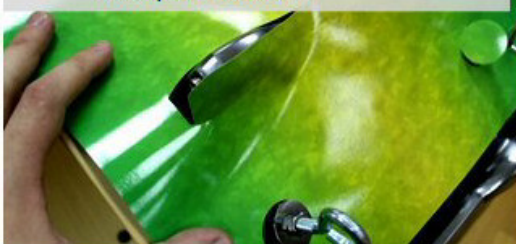
4 Open and unroll Drum Slips.



5 Lay the Drum Slip on top of the drum.



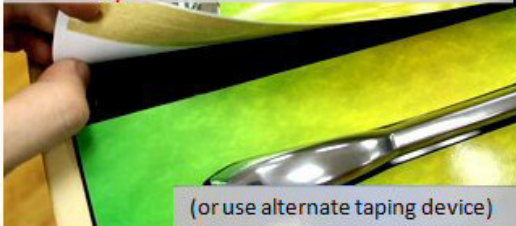
6 Begin pressing down on the Drum Slip on corresponding hardware perforations for a quick installation.



7 Continue this process around the entire drum.



8 Peel away tape strip backing. Carefully pull and stick the two ends of the Drum Slip together very tightly. *Do not stretch Drum Slip.*

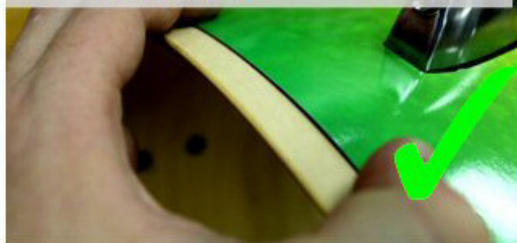


(or use alternate taping device)

9 If the Drum Slip warps when pinched, it will **NOT** install correctly.



10 The Drum Slip should not warp when pinched; it should fit flush to shell with little or no play.



Continue to Installation Finalization



## Step Three: Finalizing the installation of Drum Slips™

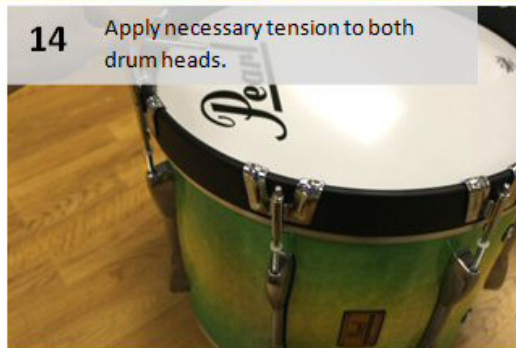
- 12** Drum Slips are forgiving, slide the Drum Slip around until the hardware is centered.



- 13** Reinstall both drum hoops and heads.



- 14** Apply necessary tension to both drum heads.



Finished

## Installation Complete

