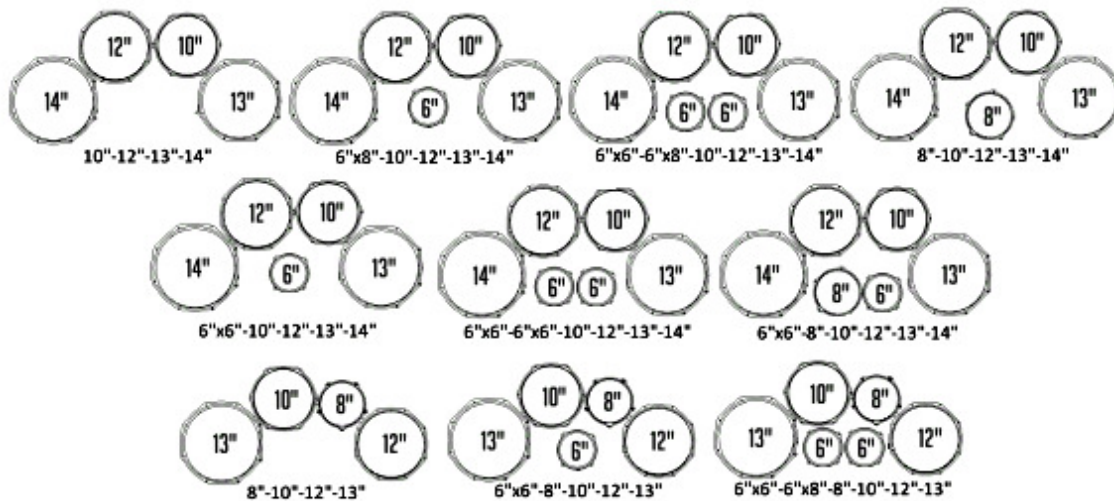




## Mapex Quantum Drum Slip™ Installation Instructions

The instructions in this document apply to the following current model Mapex Quantum marching tenor drum configurations:



**It is highly recommended that you read through this entire document *BEFORE* attempting to install Drum Slips™.**

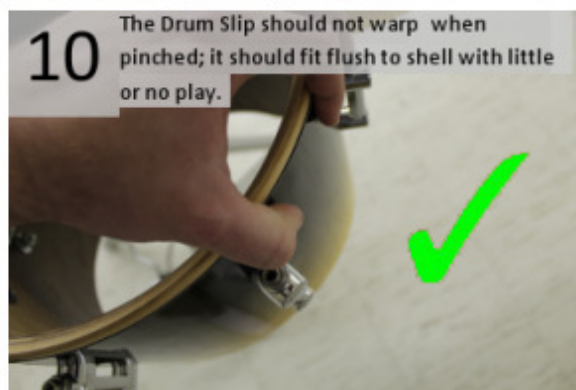
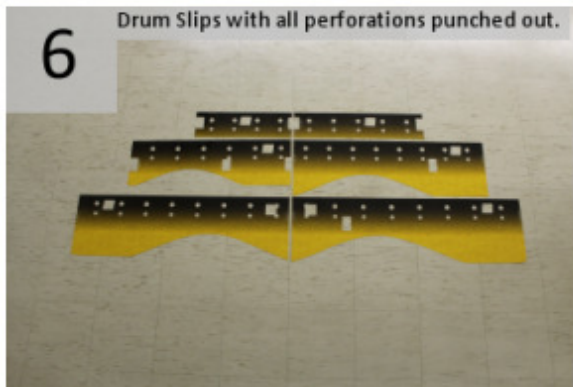
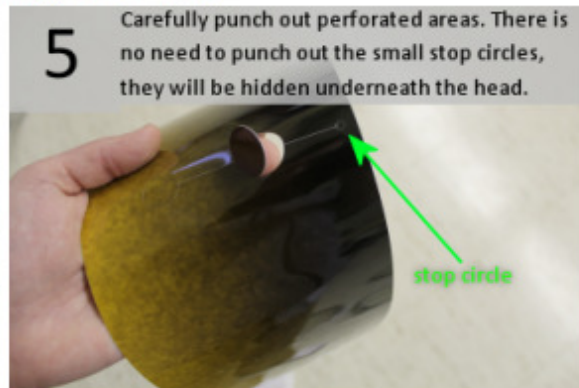
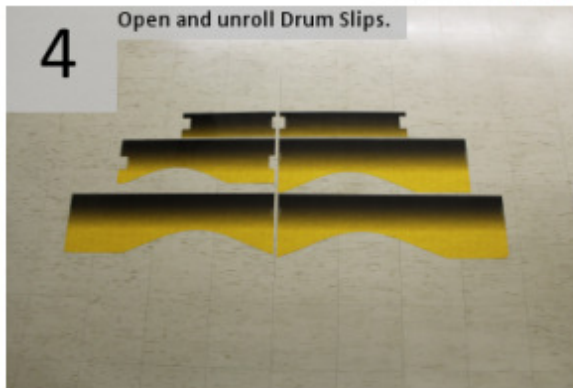
Copyright © 2013 ON2 Percussion®  
DRUM SLIPS™ ARE PATENT PENDING  
Drum Slips™ is a registered trademark of ON2 Percussion  
ON2 Percussion is not affiliated with Mapex  
[www.on2percussion.com](http://www.on2percussion.com)

**Step One: Preparing Your Drum for Drum Slips™**



Continue to the installation process.

**Step Two: Installing Drum Slips™**



**Step Three: Finalizing the installation of Drum Slips™**

**11**

Drum Slips are forgiving, slide the Drum Slip around until the hardware is centered.



**12**

If desired, reinstall tom guard. Drum Slips must be installed 100% correctly with no warping play in order to reinstall tom guard.

*Do not attempt to install tom guard if Drum Slips warp when pinched.*



**13**

Reinstall drum head and drum rim and apply necessary tension.



Repeat steps as necessary for all drums.

**Finished**

## Installation Complete

